

Team: Key
 Algebra 1

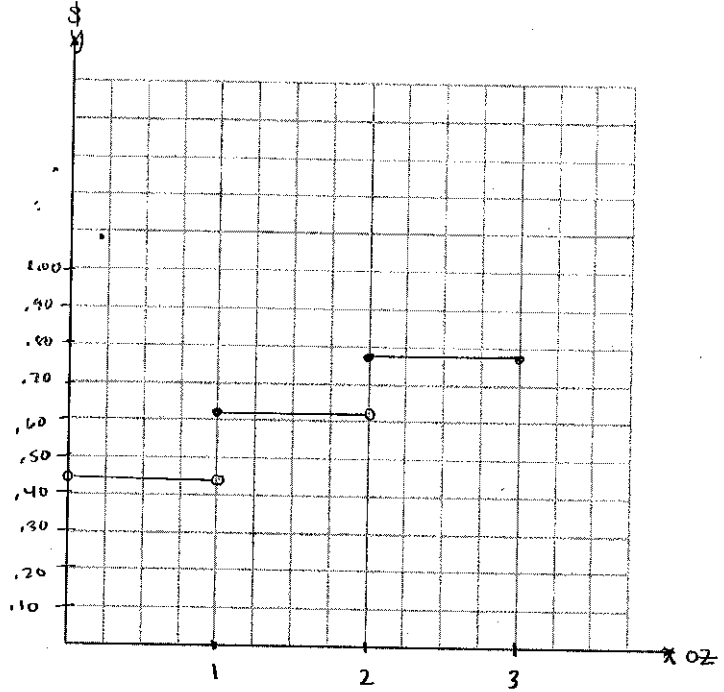
Date: _____
 Band: _____

BONUS!

1. The table lists postage for letters weighing as much as 3 oz. You want to mail a letter that weighs 2.7 oz. Graph the step functions. How much will you pay in postage?

First-Class Postage

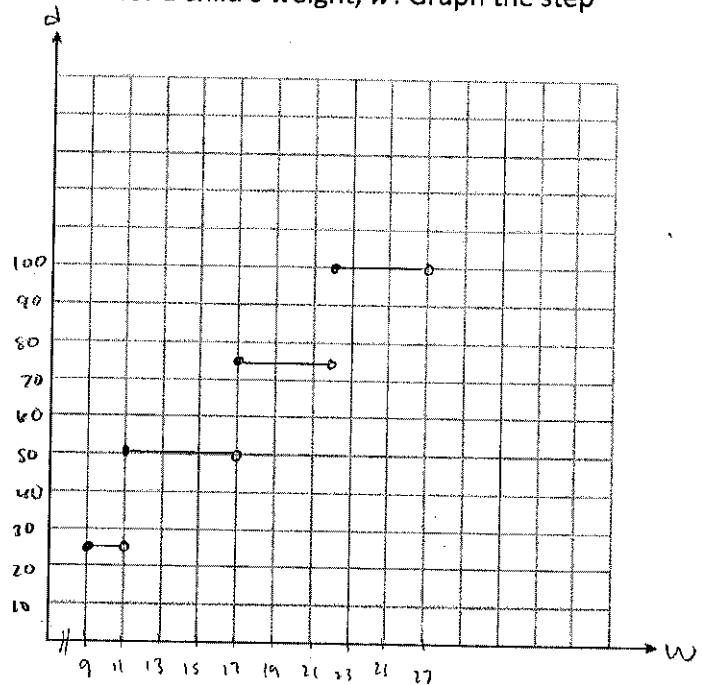
Weight x	Price y
$0 < \text{Weight} < 1 \text{ oz}$	\$.44
$1 \text{ oz} \leq \text{Weight} < 2 \text{ oz}$	\$.61
$2 \text{ oz} \leq \text{Weight} \leq 3 \text{ oz}$	\$.78



2. The table shows the dosage of a certain medication for a child's weight, w . Graph the step function for this information.

Medication Dosage

If Weight Is...	Dosage Is...
$9 \leq w < 11 \text{ lbs}$	25 mg
$11 \leq w < 17 \text{ lbs}$	50 mg
$17 \leq w < 22 \text{ lbs}$	75 mg
$22 \leq w < 27 \text{ lbs}$	100 mg



3. The table shows the income tax for a single person's monthly income. Graph the step function for this information.

Monthly Income Is	Computed Tax Is
\$0 - \$904.00	0%
\$904.01 - \$869.00	10%
\$869.01 - \$3,004.00	15%
\$3,004.01 - \$5,642.00	25%
\$5,642.01 - \$7,000.00	30%

