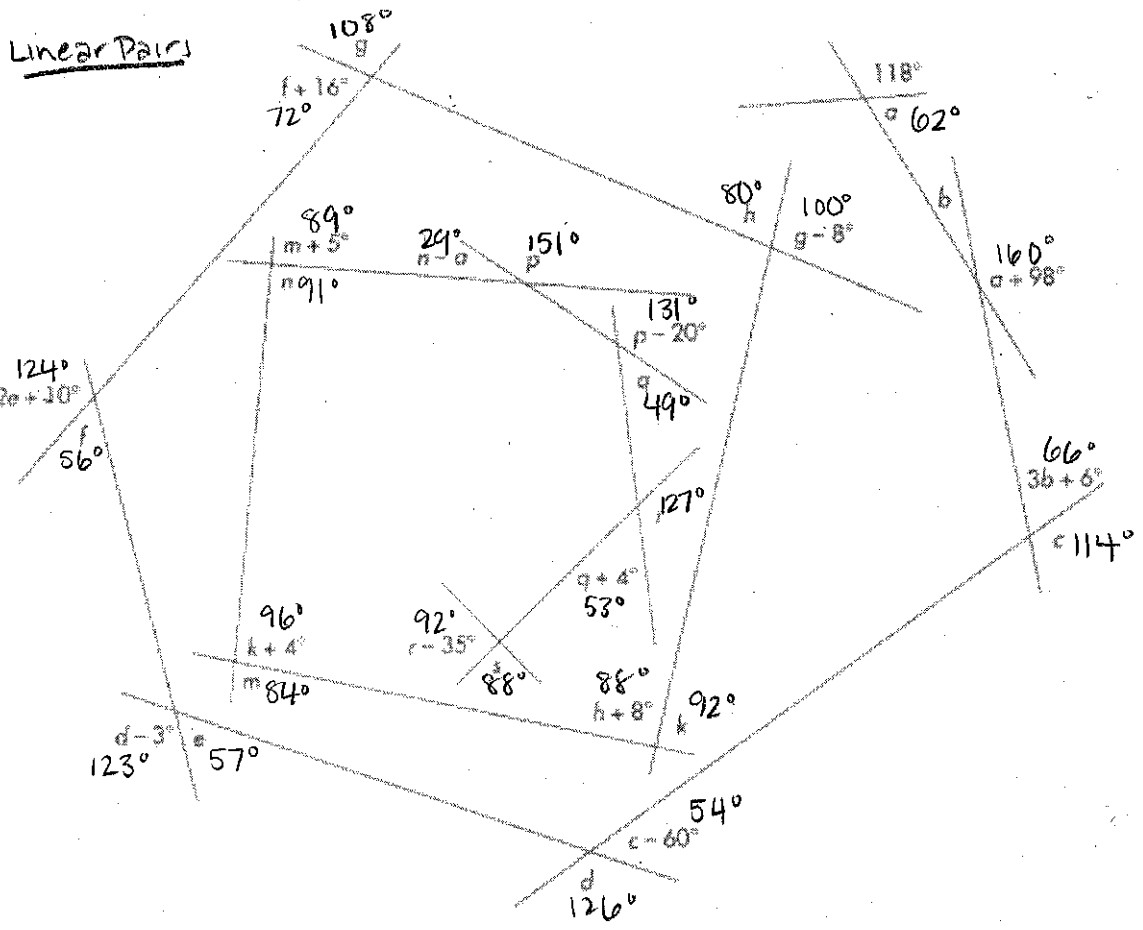


Name: key  
 Angle Puzzles

Date: \_\_\_\_\_  
 Band: \_\_\_\_\_

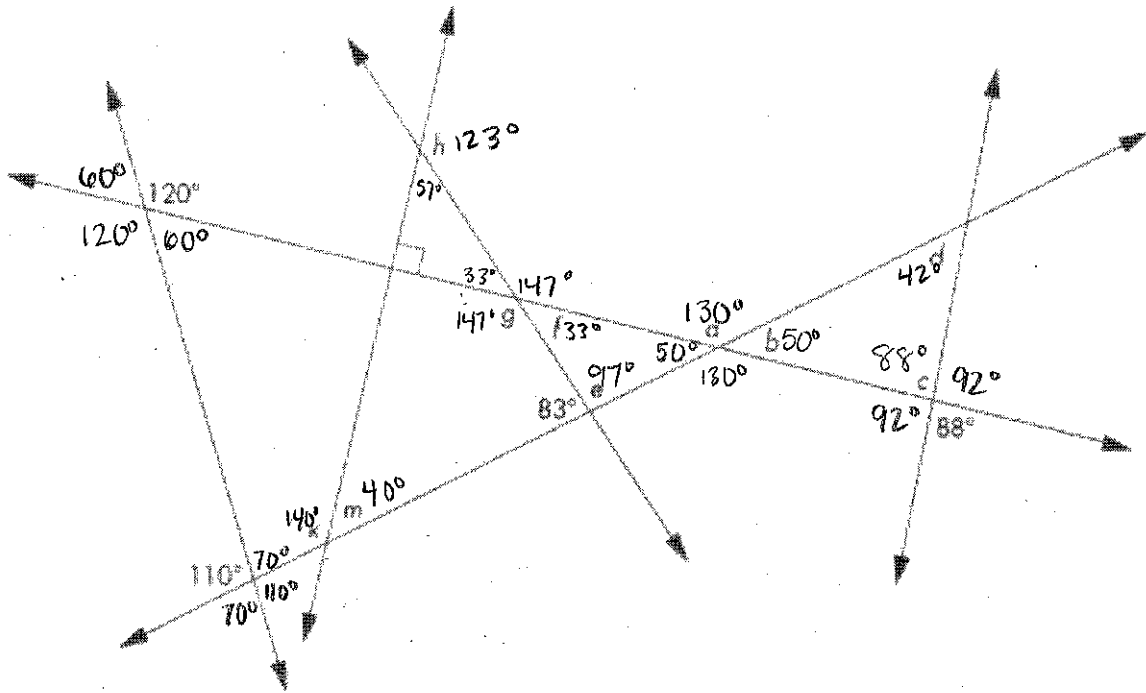
Instructions: Find the measure of each lettered angle. (Note: You may need to find the measures of unmarked angles too!)

- $a = 62^\circ$
- $b = 20^\circ$
- $c = 114^\circ$
- $d = 126^\circ$
- $e = 57^\circ$
- $f = 56^\circ$
- $g = 108^\circ$
- $h = 80^\circ$
- $k = 92^\circ$
- $m = 84^\circ$
- $n = 91^\circ$
- $p = 151^\circ$
- $q = 49^\circ$
- $r = 127^\circ$
- $s = 88^\circ$



Triangles

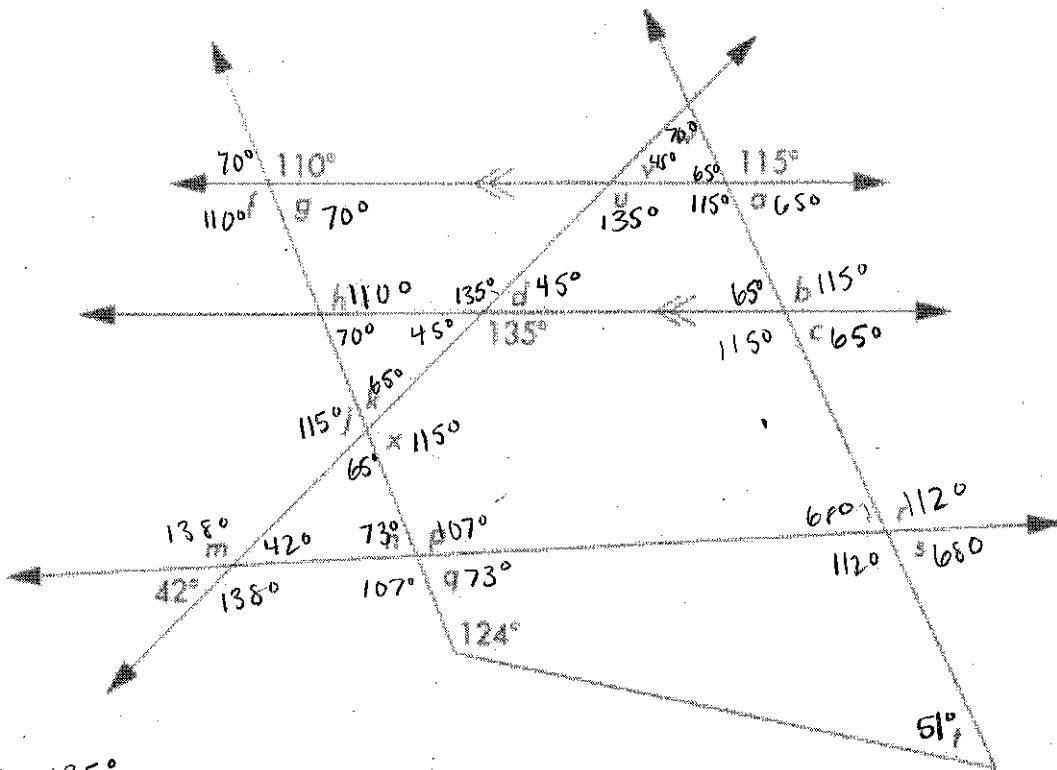
- a = 130°
- b = 50°
- c = 88°
- d = 42°
- e = 97°
- f = 33°
- g = 147°
- h = 123°
- k = 140°
- m = 40°



Parallel Lines

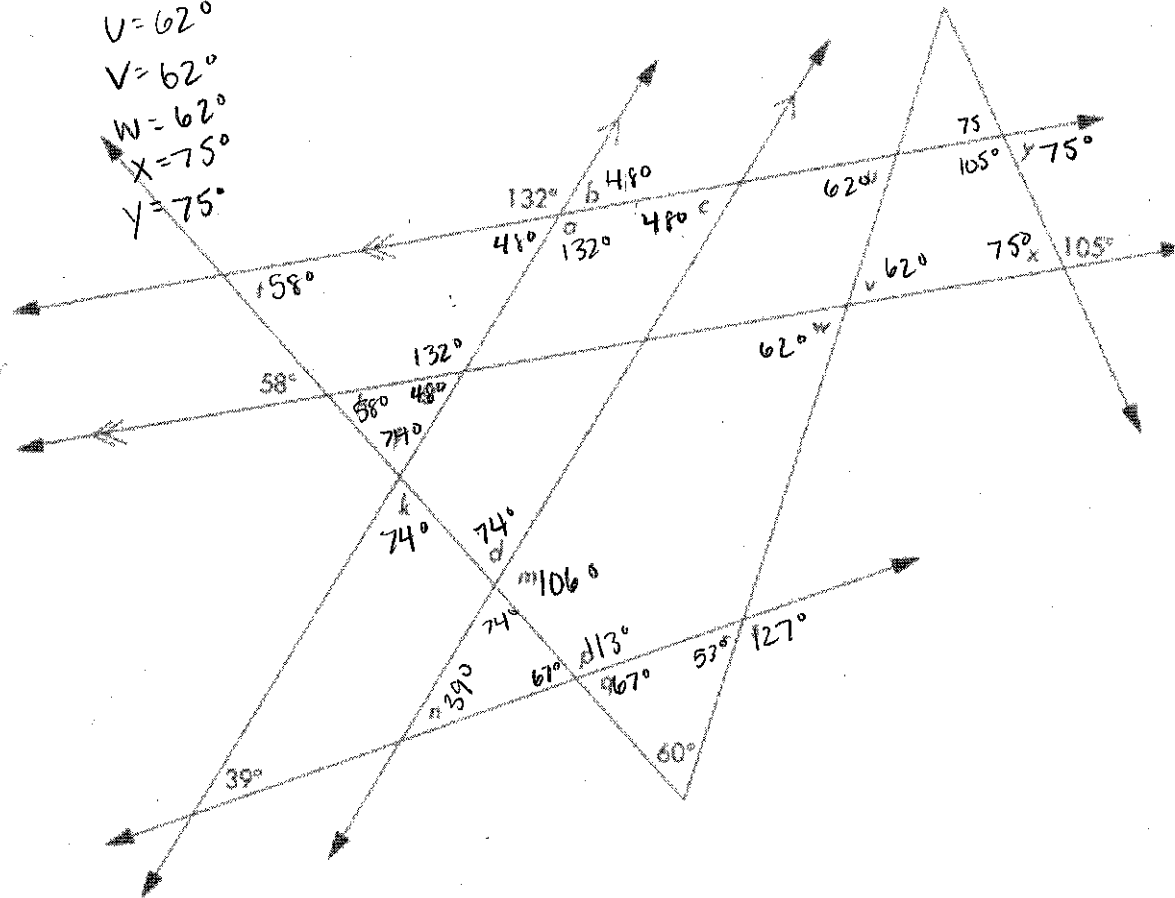
- a = 65°
- b = 115°
- c = 65°
- d = 45°
- f = 110°
- g = 70°
- h = 110°
- j = 115°
- k = 65°
- m = 138°
- n = 73°
- p = 107°
- q = 73°
- r = 112°
- s = 68°
- t = 51°

- u = 135°
- v = 45°
- w = 70°
- x = 115°

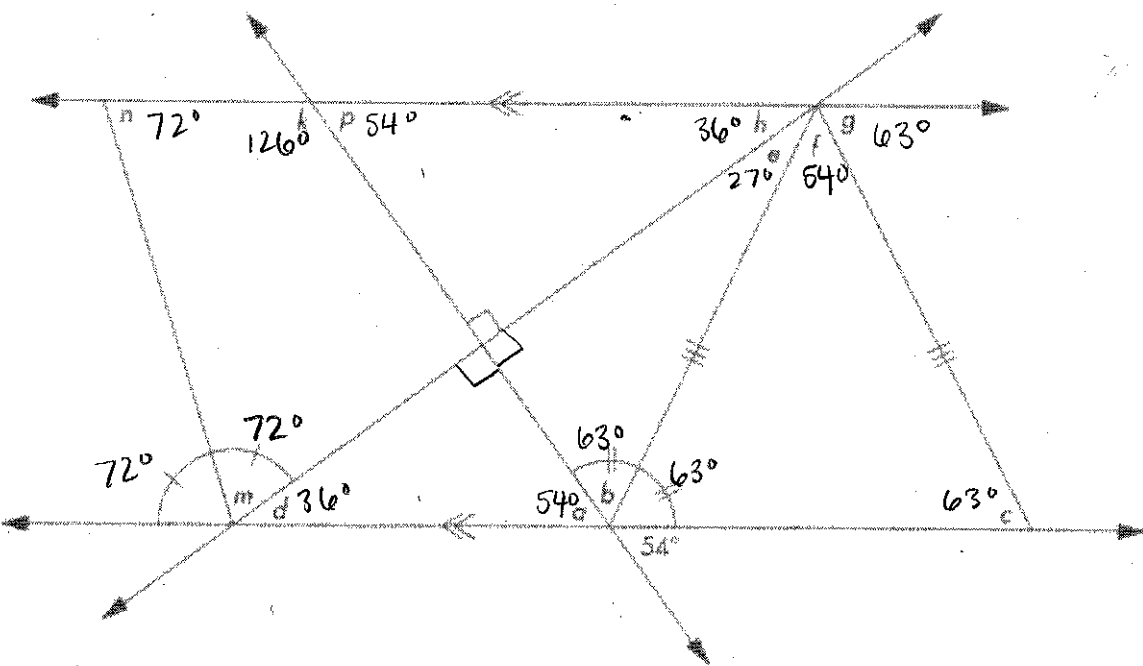


$d = 132^\circ$   
 $b = 148^\circ$   
 $c = 48^\circ$   
 $d = 74^\circ$   
 $f = 74^\circ$   
 $g = 48^\circ$   
 $h = 58^\circ$   
 $k = 74^\circ$   
 $m = 106^\circ$   
 $n = 39^\circ$   
 $p = 113^\circ$   
 $q = 67^\circ$   
 $r = 53^\circ$   
 $s = 127^\circ$

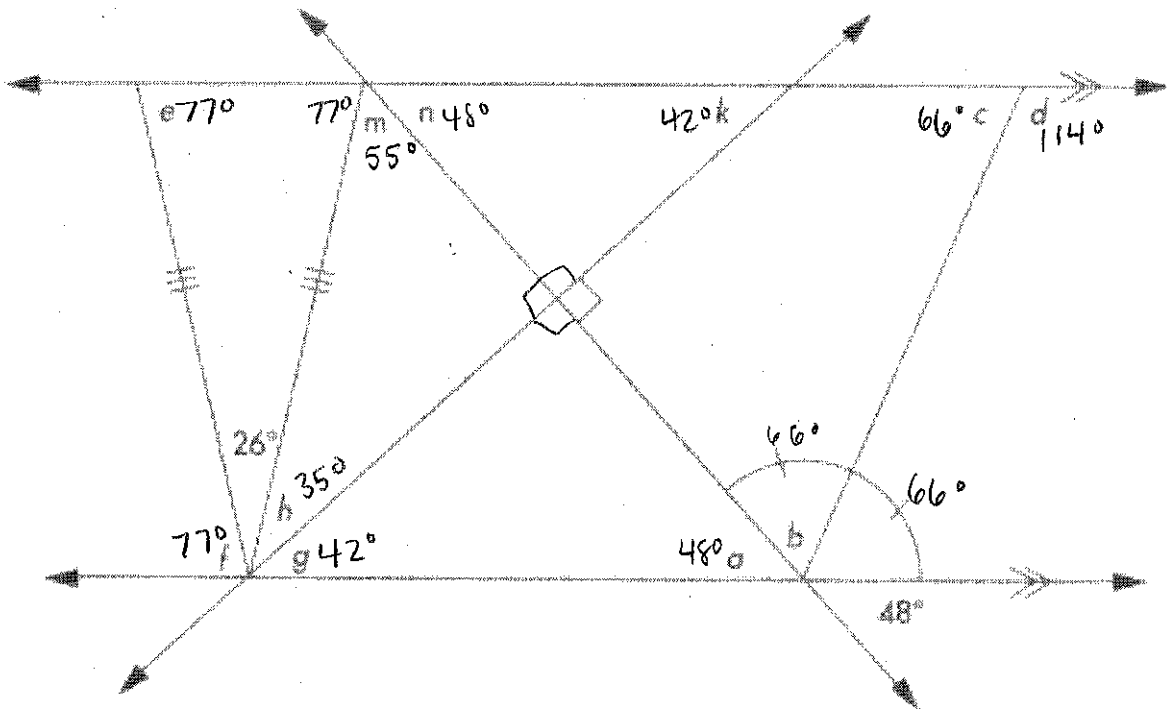
$t = 58^\circ$   
 $u = 62^\circ$   
 $v = 62^\circ$   
 $w = 62^\circ$   
 $x = 75^\circ$   
 $y = 75^\circ$



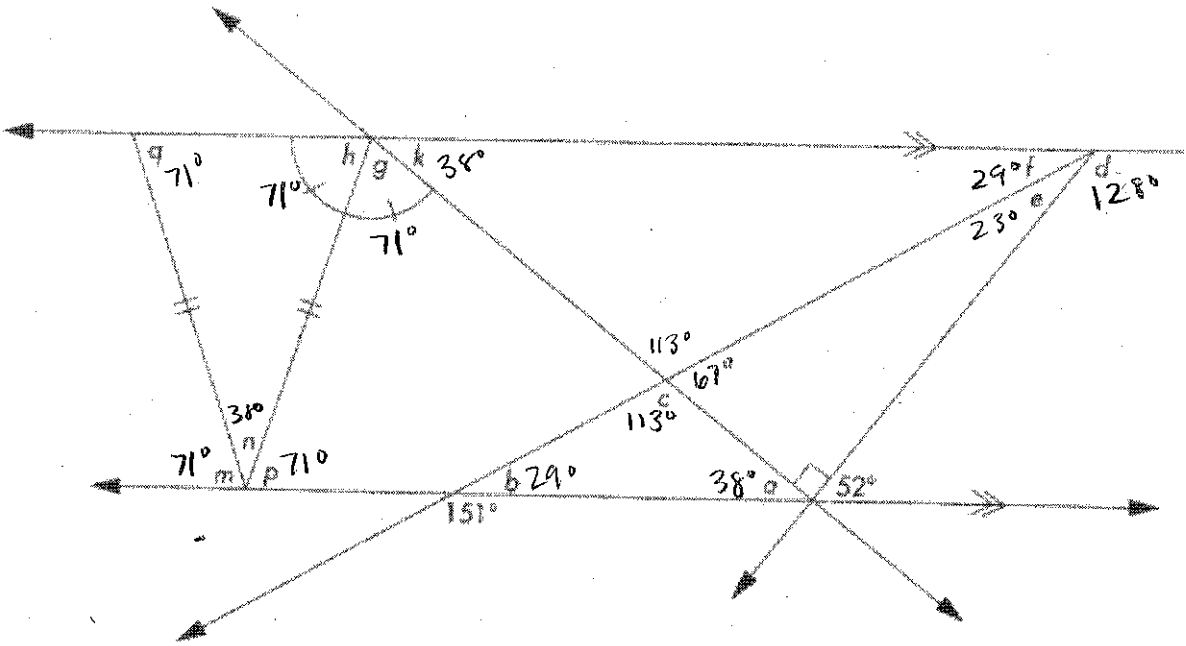
$a = 54^\circ$   
 $b = 63^\circ$   
 $c = 63^\circ$   
 $d = 36^\circ$   
 $e = 27^\circ$   
 $f = 54^\circ$   
 $g = 63^\circ$   
 $h = 36^\circ$   
 $k = 126^\circ$   
 $m = 72^\circ$   
 $n = 72^\circ$   
 $p = 54^\circ$



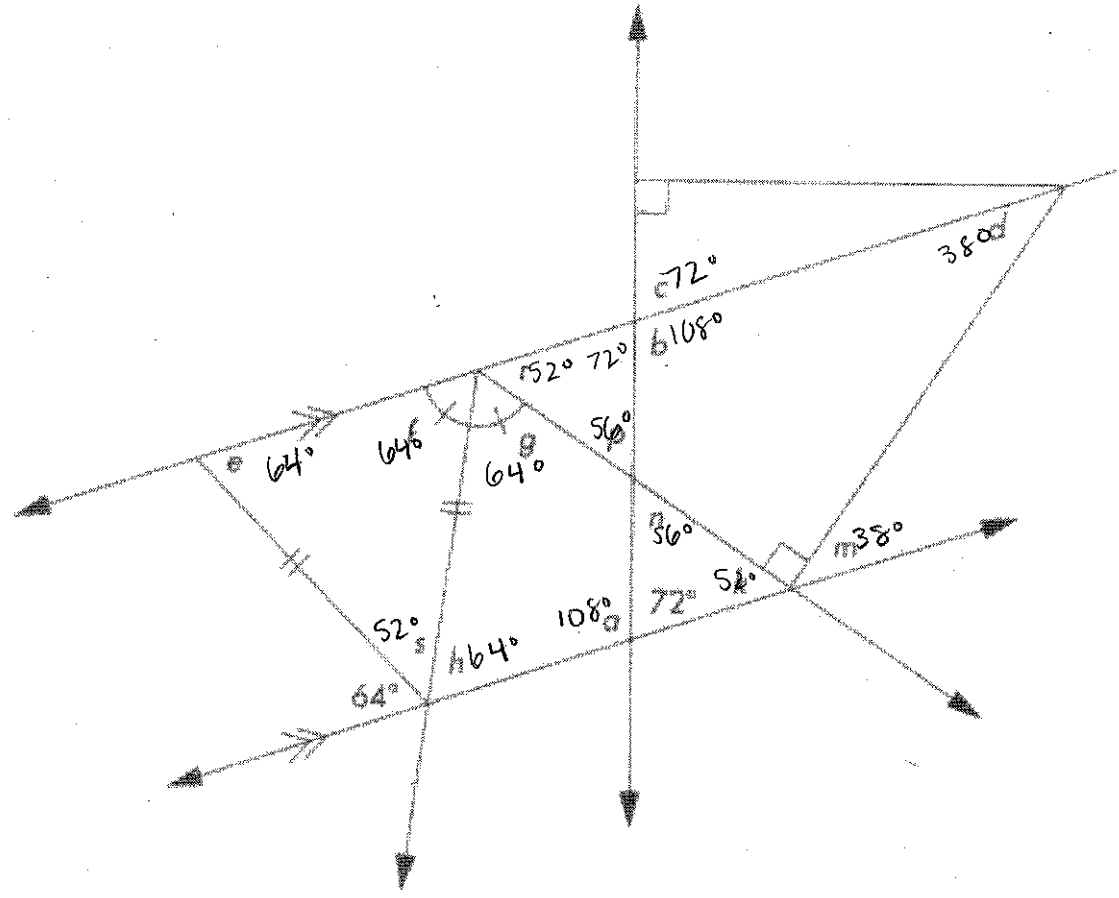
- $48^\circ$
- $= 66^\circ$
- $C = 66^\circ$
- $d = 114^\circ$
- $e = 77^\circ$
- $f = 77^\circ$
- $g = 42^\circ$
- $h = 35^\circ$
- $k = 42^\circ$
- $m = 55^\circ$
- $n = 48^\circ$



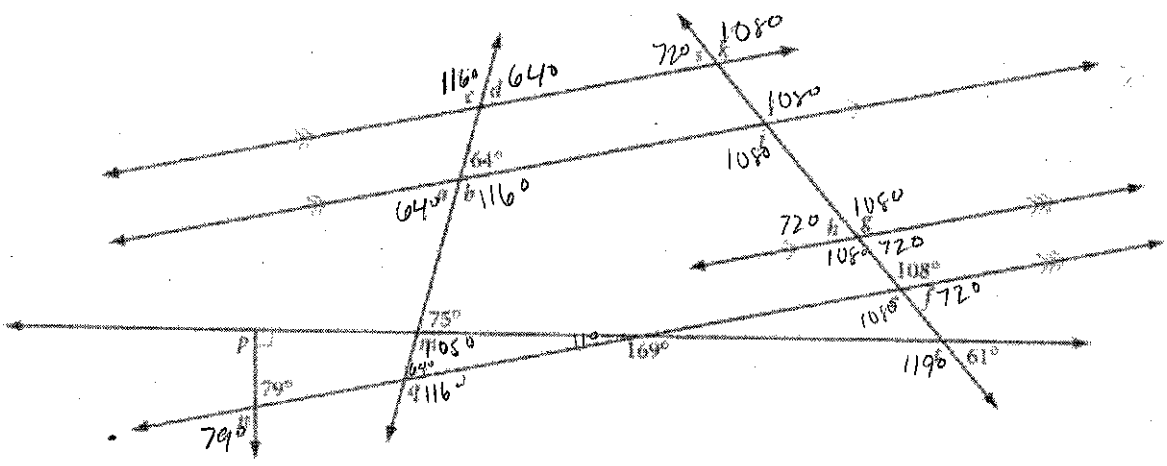
- $z = 38^\circ$
- $b = 29^\circ$
- $C = 113^\circ$
- $d = 128^\circ$
- $e = 23^\circ$
- $f = 29^\circ$
- $g = 71^\circ$
- $h = 71^\circ$
- $k = 38^\circ$
- $m = 71^\circ$
- $n = 38^\circ$
- $p = 71^\circ$
- $q = 71^\circ$



- 108°
- c = 72°
- d = 38°
- e = 64°
- f = 64°
- g = 64°
- h = 64°
- k = 52°
- m = 38°
- n = 56°
- p = 56°
- r = 52°
- s = 52°



- a = 64°
- b = 116°
- c = 116°
- d = 64°
- e = 108°
- f = 72°
- g = 108°
- h = 72°
- i = 108°
- j = 108°
- k = 108°
- m = 105°
- n = 79°
- p = 90°
- q = 116°



s = 72°  
t = 119°